

Equal Tees

Polypropylene / PVDF / PFA-Lined

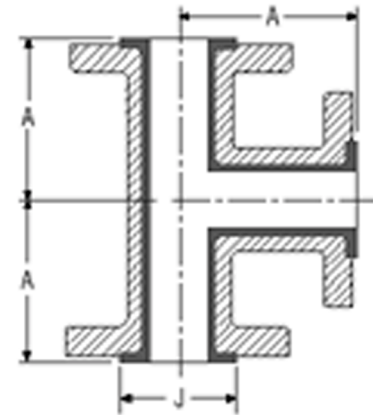
Housing Materials

DI = ASTM A395 Cast Ductile Iron
 CAST STEEL = ASTM A216

Vacuum Ratings

Polypropylene-lined fittings are rated for full vacuum at 225°F.
 PVDF-lined fittings are rated for full vacuum at 275°F.
 Consult factory for vacuum ratings on PFA-lined fittings.

Note: All PP / PVDF / PFA-lined fitting housings are Castings.
 Flanged are fixed.



150lb. Flanged						
Size (NPS)	Housing Material	Part Numbers by Liner Material and Housing Material			Dimensions (in.)	
		Polypropylene	PVDF	PFA	A	J
1	DI	TN00P1VVVN100	TN00K1VVVN100	TN00Q1VVVN100	3 1/2	1 7/8
	CAST STEEL	TN00P2ZZZN100	TN00K2ZZZN100	TN00Q2ZZZN100		
1.5	DI	TN00P1VVVNB00	TN00K1VVVNB00	TN00Q1VVVNB00	4	2 11/16
	CAST STEEL	TN00P2ZZZNB00	TN00K2ZZZNB00	TN00Q2ZZZNB00		
2	DI	TN00P1VVVN200	TN00K1VVVN200	TN00Q1VVVN200	4 1/2	3 7/16
	CAST STEEL	TN00P2ZZZN200	TN00K2ZZZN200	TN00Q2ZZZN200		
2.5	CAST STEEL	TN00P2ZZZNC00	N/A	N/A	5	3 15/16
3	DI	TN00P1VVVN300	TN00K1VVVN300	TN00Q1VVVN300	5 1/2	4 5/8
	CAST STEEL	TN00P2ZZZN300	TN00K2ZZZN300	TN00Q2ZZZN300		
4	DI	TN00P1VVVN400	TN00K1VVVN400	TN00Q1VVVN400	6 1/2	5 15/16
	CAST STEEL	TN00P2ZZZN400	TN00K2ZZZN400	TN00Q2ZZZN400		
6	DI	TN00P1VVVN600	TN00K1VVVN600	N/A	8	8
	CAST STEEL	TN00P2ZZZN600	TN00K2ZZZN600			
8	DI	TN00P1VVVN800	TN00K1VVVN800		9	10 1/16
	CAST STEEL	TN00P2ZZZN800	TN00K2ZZZN800			
10	CAST STEEL	TN00P2ZZZNE00	N/A		11	12 3/4
12	CAST STEEL	TN00P2ZZZNF00			12	15

300lb. Flanged - Cast Steel Body Only					
Size (NPS)	Housing Material	Part Numbers by Liner Material		Dimensions (in.)	
		Polypropylene	PVDF	A	J
1	CAST STEEL	TN00P9YYYYN100	TN00K9YYYYN100	4	1 7/8
1.5		TN00P9YYYYNB00	TN00K9YYYYNB00	4 1/2	2 11/16
2		TN00P9YYYYN200	TN00K9YYYYN200	5	3 7/16
3		TN00P9YYYYN300	TN00K9YYYYN300	6	4 5/8
4		TN00P9YYYYN400	TN00K9YYYYN400	7	5 15/16
6		TN00P9YYYYN600	TN00K9YYYYN600	8 1/2	8