

# DI Short Stack Tees & Crosses

## PTFE-Lined, 150lb. Flanged

### Housing Materials

DI = ASTM A395 Cast Ductile Iron

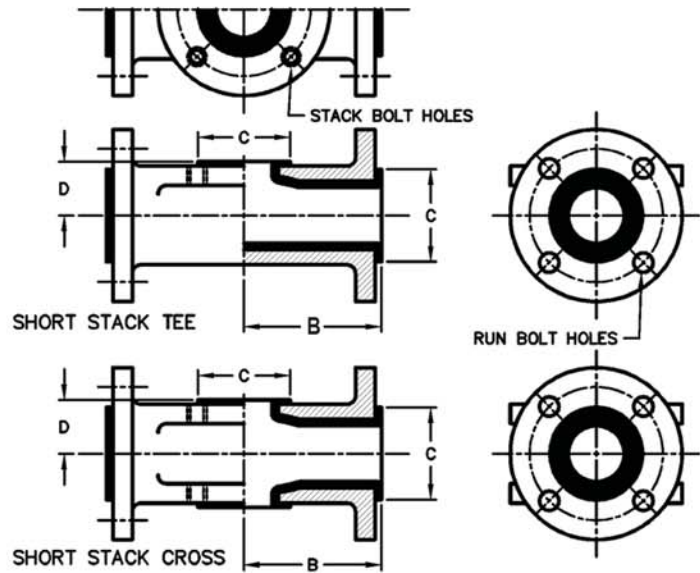
### Flange Materials

DI = ASTM A395 Cast Ductile Iron

FV = Full Vacuum

\*All bolt holes are tapped.

\*\* 4 holes closest to centerline are tapped. The other bolt holes are bored smooth.



Short Stack Tee - 150lb. Flanged									
Size (NPS)	Part Numbers	Dimensions (in.)			Housing Material	Flanges			Vacuum Rating (in. Hg/°F)
		B	C	D		Material	Stack Bolt Hole	Run Bolt Hole	
1	TH00B1VVVN100	3 1/2	2	1 3/16	DI	DI	1/2-13*	1/2-13	FV/450
1.5	TH00B1VVVNB00	4	2 7/8	1 15/16			1/2-13*	1/2-13	FV/450
2	TH00B1VVVN200	4 1/2	3 5/8	1 11/16			5/8-11*	3/4	FV/450
3	TH00B1VVVN300	5 1/2	5	2 3/16			5/8-11*	3/4	FV/350
4	TH00B1VVVN400	6 1/2	6 3/16	2 11/16			5/8-11*	3/4	FV/210
6	TH00B1VVVN600	8	8 1/2	3 11/16			3/4-10**	7/8	No Vacuum
8	TH00B1VVVN800	10	10 5/8	4 15/16			3/4-10**	7/8	
10	TH00B1VVVNE00	11	12 3/4	6			7/8-9**	1	
12	TH00B1VVVNF00	12	15	7 1/32			7/8-9**	1	

Short Stack Cross - 150lb. Flanged									
Size (NPS)	Part Numbers	Dimensions (in.)			Housing Material	Flanges			Vacuum Rating (in. Hg/°F)
		B	C	D		Material	Stack Bolt Hole	Run Bolt Hole	
1	CH00B1VVVN100	3 1/2	2	1 3/16	DI	DI	1/2-13*	1/2-13	FV/300
1.5	CH00B1VVVNB00	4	2 7/8	1 15/16			1/2-13*	1/2-13	FV/250
2	CH00B1VVVN200	4 1/2	3 5/8	1 11/16			5/8-11*	3/4	FV/250
3	CH00B1VVVN300	5 1/2	5	2 3/16			5/8-11*	3/4	FV/200
4	CH00B1VVVN400	6 1/2	6 3/16	2 11/16			5/8-11**	3/4	25/200
6	CH00B1VVVN600	8	8 1/2	3 11/16			3/4-10**	7/8	No Vacuum
8	CH00B1VVVN800	10	10 5/8	4 15/16			3/4-10**	7/8	
10	CH00B1VVVNE00	11	12 3/4	6			7/8-9**	1	