

Reducing Tees

Polypropylene / PVDF / PFA-Lined

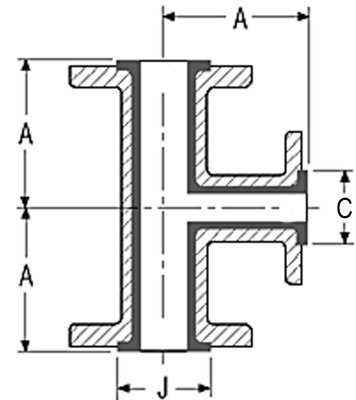
Housing Materials

DI = ASTM A395 Cast Ductile Iron
 CAST STEEL = ASTM A216

Vacuum Ratings

Polypropylene-lined fittings are rated for full vacuum at 225°F.
 PVDF-lined fittings are rated for full vacuum at 275°F.
 Consult factory for vacuum ratings on PFA-lined fittings.

Note: All PP / PVDF / PFA-lined fitting housings are Castings.
 Flanged are fixed.



150lb. Flanged								
Major Size (NPS)	Minor Size (NPS)	Housing Material	Part Numbers by Liner Material and Housing Material			Dimensions (in.)		
			Polypropylene	PVDF	PFA	A	J	C
1.5	1	DI	TR00P1VVVNB10	N/A	TR00Q1VVVNB10	4	2 11/16	1 7/8
		CAST STEEL	TR00P2ZZZNB10	TR00K2ZZZNB10	TR00Q2ZZZNB10			
2	1	DI	TR00P1VVVN210	N/A	TR00Q1VVVN210	4 1/2	3 7/16	1 7/8
		CAST STEEL	TR00P2ZZZN210	TR00K2ZZZN210	TR00Q2ZZZN210			2 11/16
	1.5	DI	TR00P1VVVN2B0	N/A	TR00Q1VVVN2B0			3 7/16
		CAST STEEL	TR00P2ZZZN2B0	TR00K2ZZZN2B0	TR00Q2ZZZN2B0			2 11/16
2.5	1	DI	TR00P1VVVNC10	N/A	N/A	5	3 15/16	1 7/8
		DI	TR00P1VVVNCB0					2 11/16
	2	DI	TR00P1VVVNC20					3 7/16
		CAST STEEL	TR00P2ZZZNC20					2 11/16
3	1	DI	N/A	N/A	TR00Q1VVVN310	5 1/2	4 5/8	1 7/8
		CAST STEEL	TR00P2ZZZN310	TR00K2ZZZN310	N/A			2 11/16
	1.5	DI	TR00P1VVVN3B0	N/A	TR00Q1VVVN3B0			3 7/16
		CAST STEEL	TR00P2ZZZN3B0	TR00K2ZZZN3B0	N/A			2 11/16
	2	DI	TR00P1VVVN320	N/A	TR00Q1VVVN320			3 7/16
		CAST STEEL	TR00P2ZZZN320	TR00K2ZZZN320	N/A			2 11/16
	2.5	DI	TR00P1VVVN3C0	N/A	N/A			3 15/16
	4	1	DI	TR00P1VVVN410	N/A			N/A
CAST STEEL			TR00P2ZZZN410	TR00K2ZZZN410	2 11/16			
1.5		DI	TR00P1VVVN4B0	N/A	TR00Q1VVVN4B0	3 7/16		
		CAST STEEL	TR00P2ZZZN4B0	TR00K2ZZZN4B0	N/A	2 11/16		
2		DI	TR00P1VVVN420	N/A	TR00Q1VVVN420	3 7/16		
		CAST STEEL	TR00P2ZZZN420	TR00K2ZZZN420	N/A	2 11/16		
3		DI	TR00P1VVVN430	N/A	TR00Q1VVVN430	4 5/8		
		CAST STEEL	TR00P2ZZZN430	TR00K2ZZZN430	N/A	3 7/16		

150lb. Flanged, cont'																	
Major Size (NPS)	Minor Size (NPS)	Housing Material	Part Numbers by Liner Material and Housing Material			Dimensions (in.)											
			Polypropylene	PVDF	PFA	A	J	C									
6	1	CAST STEEL	TR00P2ZZZN610	TR00K2ZZZN610	N/A	8	9	1 7/8									
	1.5	DI	TR00P1VVVN6B0	N/A				2 11/16									
		CAST STEEL	TR00P2ZZZN6B0	TR00K2ZZZN6B0				3 7/16									
	2	DI	TR00P1VVVN620	N/A				N/A	8	9	4 5/8						
		CAST STEEL	TR00P2ZZZN620	TR00K2ZZZN620							5 15/16						
	3	DI	TR00P1VVVN630	N/A							N/A	8	9	1 7/8			
		CAST STEEL	TR00P2ZZZN630	TR00K2ZZZN630										2 11/16			
	4	DI	TR00P1VVVN640	N/A										N/A	8	9	3 7/16
CAST STEEL		TR00P2ZZZN640	TR00K2ZZZN640	4 5/8													
8	1	CAST STEEL	TR00P2ZZZN810	TR00K2ZZZN810	N/A	9	10 1/16										5 15/16
	1.5	CAST STEEL	TR00P2ZZZN8B0	TR00K2ZZZN8B0													8
	2	DI	TR00P1VVVN820	N/A				N/A	9	10 1/16							1 7/8
		CAST STEEL	TR00P2ZZZN820	TR00K2ZZZN820													2 11/16
	3	DI	TR00P1VVVN830	N/A							N/A	9	10 1/16				3 7/16
		CAST STEEL	TR00P2ZZZN830	TR00K2ZZZN830													4 5/8
	4	DI	TR00P1VVVN840	N/A										N/A	9	10 1/16	4 5/8
		CAST STEEL	TR00P2ZZZN840	TR00K2ZZZN840													5 15/16
6	DI	TR00P1VVVN860	N/A	N/A	9	10 1/16	8										
	CAST STEEL	TR00P2ZZZN860	TR00K2ZZZN860														

300lb. Flanged - Cast Steel Body Only								
Major Size (NPS)	Minor Size (NPS)	Housing Material	Part Numbers by Liner Material		Dimensions (in.)			
			Polypropylene	PVDF	A	J	C	
1.5	1	CAST STEEL	TR00P9YYNB10	N/A	4 1/2	2 11/16	1 7/8	
2	1		TR00P9YYN210	TR00K9YYN210	5	3 7/16	1 7/8	
3	2		TR00P9YYN320	TR00K9YYN320	6	4 5/8	3 7/16	
4	2		TR00P9YYN420	TR00K9YYN420	7	5 15/16	3 7/16	