

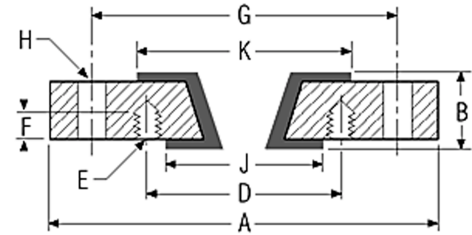
Carbon Steel Reducing Filler Flanges

PTFE-Lined

Carbon Steel conforms to ASTM A516 GR 70 or SAE 1010-1030.

1" – 8" is Full Vacuum rated to 450°F.
 10" & 12" are not vacuum rated.

Note: The minor size bolt holes on reducing filler flanges are always threaded. Also, many sizes of this style of reducing filler flange are constructed with both the major size and minor size bolt holes as threaded. This is to prevent interference between bolt heads and nuts of the two connecting flanges. Please be aware of what these will be connected to - if connecting to other flanges that have threaded holes, a concentric reducer (through holes on both flanges) may be required. The PTFE-lined ductile iron reducing flanges are constructed with the major holes as through holes in all sizes. The thickness dimension may be different than the carbon steel reducing flange.



150lb.														
Major Size (NPS)	Minor Size (NPS)	Part Numbers	Thick ness	OD	H - Bolt Holes			E - Bolt Holes				Flare Diameters		Bolt Hole Rotation
					No.	Size	Bolt Circle Dia.	No.	Size	Bolt Circle Dia.	Depth	K	J	
1	.5	3T00M0ZZ00170	1 1/2	4 1/4	4	1/2-13	3 1/8	4	1/2-13	2 3/8	11/16	2	1 3/4	45°
	.75	3T00M0ZZ00190								2 3/4				
1.5	1	3T00M0ZZ00B10	1 1/2	5	4	1/2-13	3 7/8	4	1/2-13	3 1/8	9/16	2 7/8	2	45°
2	1	3T00M0ZZ00210	1 1/2	6	4	5/8-11	4 3/4	4	1/2-13	3 1/8	9/16	3 5/8	2	None
	1.5	3T00M0ZZ002B0								3 7/8	5/8		2 7/8	45°
3	1	3T00M0ZZ00310	1 1/2	7 1/2	4	5/8-11	6	4	1/2-13	3 1/8	9/16	5	2	None
	1.5	3T00M0ZZ003B0								3 7/8	5/8		2 7/8	
	2	3T00M0ZZ00320							5/8-11	4 3/4	3/4		3 5/8	45°
4	1	3T00M0ZZ00410	2	9	8	3/4	7 1/2	4	1/2-13	3 1/8	9/16	6 3/16	2	None
	1.5	3T00M0ZZ004B0								3 7/8	5/8		2 7/8	
	2	3T00M0ZZ00420	1 1/2						5/8-11	4 3/4	3/4		3 5/8	
	3	3T00M0ZZ00430								6	5			
6	1	3T00M0Z00610	2	11	8	7/8	9 1/2	4	1/2-13	3 1/8	9/16	8 1/2	2	None
	1.5	3T00M0Z006B0								3 7/8	5/8		2 7/8	
	2	3T00M0ZZ00620							4 3/4	3/4	3 5/8			
	3	3T00M0ZZ00630							6		5			
	4	3T00M0ZZ00640	1 1/2					3/4-10	8	7 1/2	6 3/16			
8	3	3T00M0ZZ00830	2	13 1/2	8	7/8	11 3/4	4	5/8-11	6	3/4	10 5/8	5	None
	4	3T00M0ZZ00840								7 1/2			6 3/16	
	6	3T00M0ZZ00860	1 1/2					3/4-10	8	3/4-10	9 1/2		13/16	
10	3	3T00B0ZZ00E30	2	16	12	1	14 1/4	4	3/4-10	6	5/8	12 3/4	5	None
	4	3T00B0ZZ00E40								7 1/2	3/4		6 3/16	
	6	3T00B0ZZ00E60						8		9 1/2	13/16		8 1/2	
	8	3T00B0ZZ00E80								11 3/4			10 5/8	
12	6	3T00B0ZZ00F60	2	19	12	1	17	8	3/4-10	9 1/2	13/16	15	8 1/2	None
	8	3T00B0ZZ00F80								11 3/4			10 5/8	
	10	3T00B0ZZ00FE0						12		7/8-9	12		7/8-9	

300lb.																		
Major Size (NPS)	Minor Size (NPS)	Part Numbers	Thick ness	OD	H - Bolt Holes			E - Bolt Holes				Flare Diameters		Bolt Hole Rotation	Vacuum Rating (in. Hg°/F)			
					No.	Size	Bolt Circle Dia.	No.	Size	Bolt Circle Dia.	Depth	K	J					
			G	D			F											
			B	A														
1	.5	3T00B0YY0M170	15/16	4 7/8	4	5/8-11	3 1/2	4	1/2-13	2 5/8	9/16	2	1 3/4	45°	See Note			
	.75	3T00B0YY0M190							5/8-11	3 1/4			1 11/16					
1.5	.5	3T00B0YY0MB70	1 1/16	6 1/8	4	3/4-10	4 1/2	4	1/2-13	2 5/8	9/16	2 7/8	1 3/8	45°	See Note			
	1	3T00M0YY00B10	1 1/2						5/8-11	3 1/2			5/8		2	FV/450		
2	1	3T00M0YY00210	1 1/2	6 1/2	8	5/8-11	5	4	5/8-11	3 1/2	5/8	3 5/8	2	---	FV/450			
	1.5	3T00M0YY002B0							3/4-10	4			5/8			2 7/8		
3	1	3T00M0YY00310	1 1/2	8 1/4	8	3/4-10	6 5/8	4	5/8-11	3 1/2	5/8	5	2	---	FV/450			
	1.5	3T00M0YY003B0							3/4-10	4 1/2			2 7/8					
	2	3T00M0YY00320							5/8-11	5			3 5/8					
	2.5	3T00B0YY0M3C0	1 3/8						3/4-10	5 7/8	3/4		4 1/8	22.5°	See Note			
4	1	3T00M0YY00410	2	10	8	7/8	7 7/8	4	5/8-11	3 1/2	5/8	6 3/16	2	---	FV/450			
	1.5	3T00M0YY004B0	1 1/2			3/4-10			5/8-11	5			3/4			3/4-10	4 1/2	2 7/8
	2	3T00M0YY00420														5/8-11	5	3 5/8
	3	3T00M0YY00430									3/4-10			6 5/8	5	22.5°		
5	4	3T00B0YY0M540	1 5/8	11	8	3/4-10	9 1/4	8	3/4-10	7 7/8	1	7 5/16	6 3/16	22.5°	See Note			
6	1	3T00M0YY00610	2	12 1/2	12	7/8	10 5/8	4	5/8-11	3 1/2	5/8	8 1/2	2	---	FV/450			
	1.5	3T00B0YY0M6B0							3/4-10	4 1/2			1		2 7/8	See Note		
	2	3T00M0YY00620							5/8-11	5			3 5/8					
	3	3T00M0YY00630							3/4-10	6 5/8	3/4		5		FV/450			
	4	3T00M0YY00640	1 1/2			3/4-10		7 7/8	6 3/16	7.5°								
8	1	3T00B0YY0M810	1 7/8	15	12	1	13	4	5/8-11	3 1/2	11/16	10 5/8	2	---	See Note			
	1.5	3T00B0YY0M8B0							3/4-10	4 1/2	1		2 7/8					
	2	3T00B0YY0M820							5/8-11	5	3 5/8							
	3	3T00M0YY00830	2					3/4	6 5/8	5	FV/450							
	4	3T00M0YY00840							3/4-10	7 7/8	6 3/16							
	6	3T00M0YY00860							1 1/2	7/8-9	12		10 5/8	13/16	8 1/2	15°		